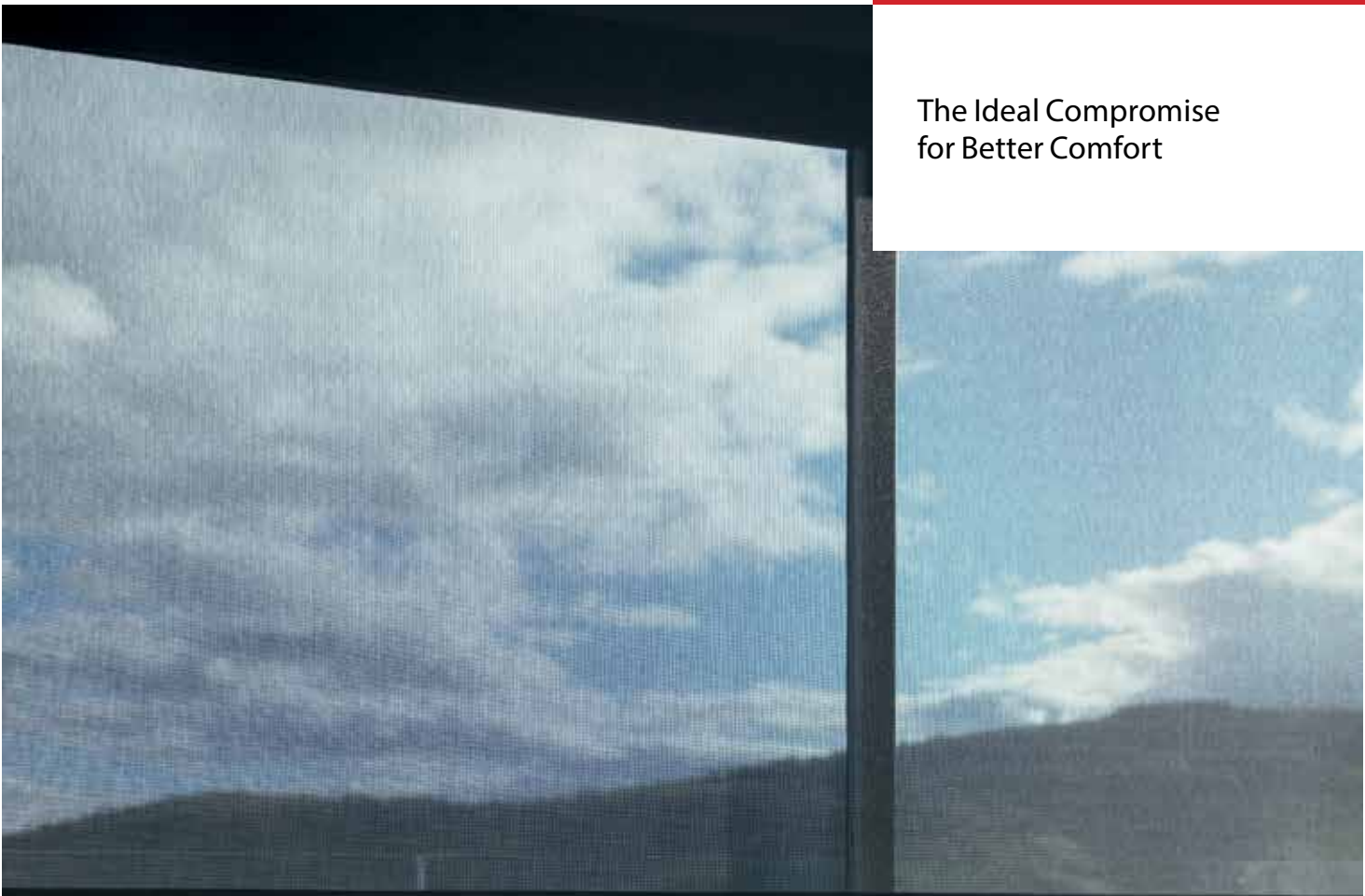


Serge Ferrari

Soltis
Harmony 88

The Ideal Compromise
for Better Comfort



Indoor & Outdoor Use:

Roller shades, skylight shades, sliding panels, pergolas



■ **Perfect balance**

Soltis® Harmony 88 provides the ideal openness factor to fully enjoy outdoor views while blocking up to 93% of solar contributions.

■ **Design and style**

An even weave pattern, a unique textured appearance and a range of 17 colors to coordinate with your interior.

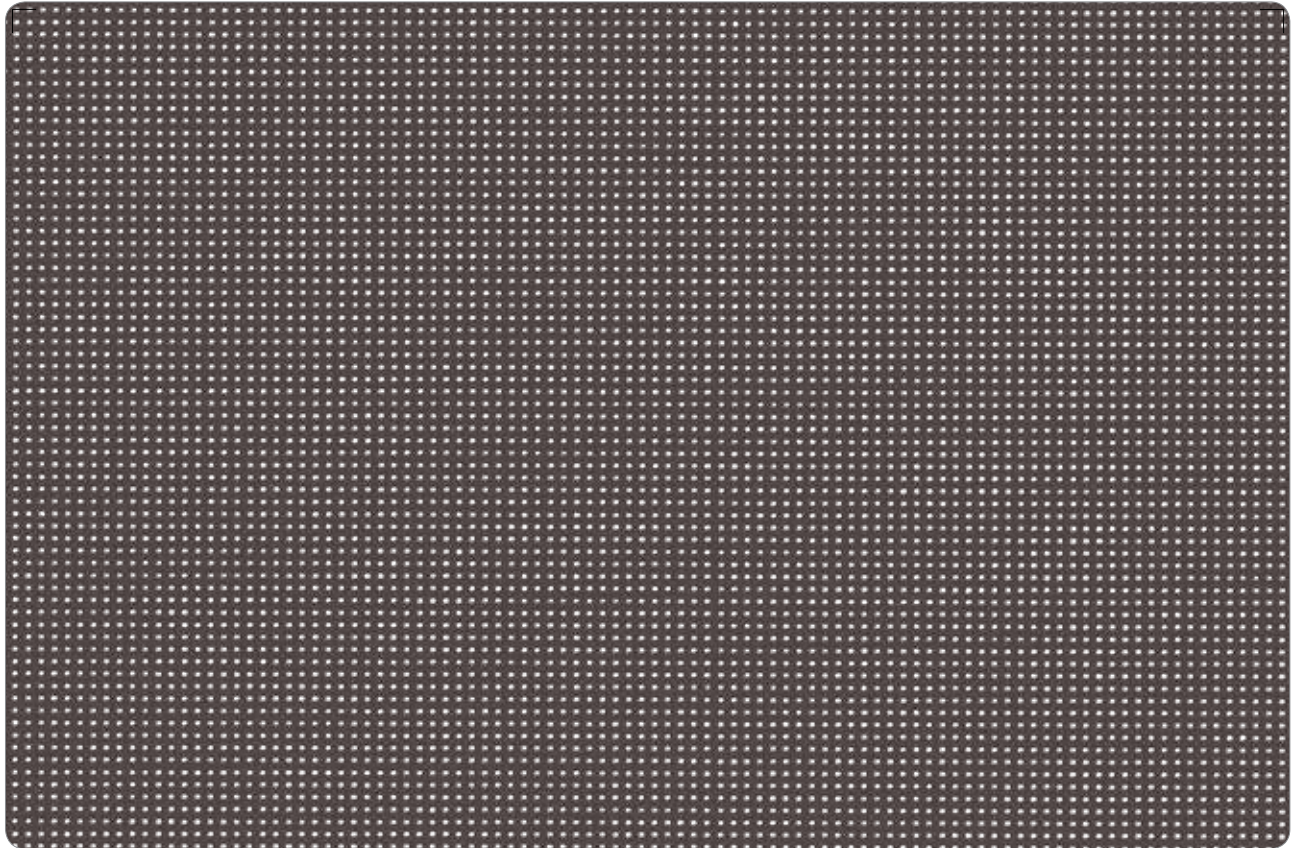
■ **Long-lasting and sustainable**

The Précontraint technology gives our materials an exceptionally long life. They are also 100% recyclable at the end of their service life.

Soltis Harmony 88 helps maintain good indoor air quality, as proven by its GREENGUARD Gold certification.

The right balance
so you can enjoy only
the best of the sun





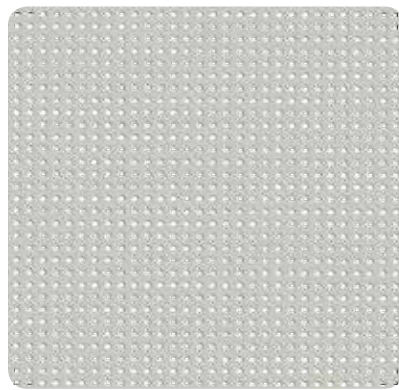
Bronze 69.6 in — 105.1 in

88-2043



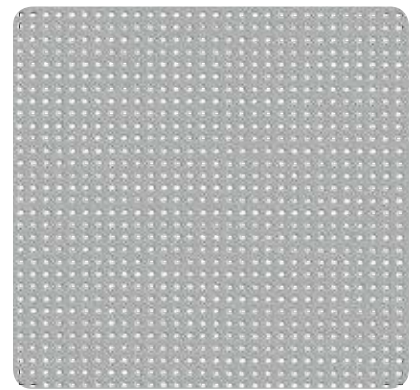
White 69.6 in — 105.1 in

88-2044



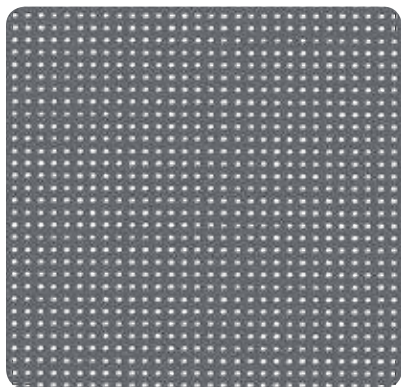
Boulder 69.6 in — 105.1 in

88-2171



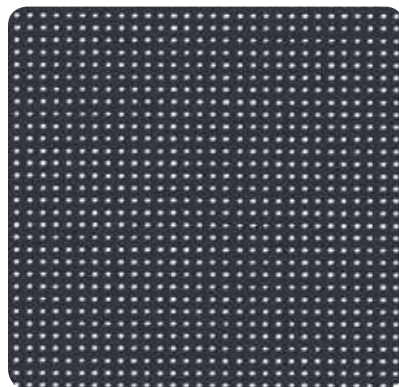
Alu/Alu 69.6 in — 105.1 in

88-2048



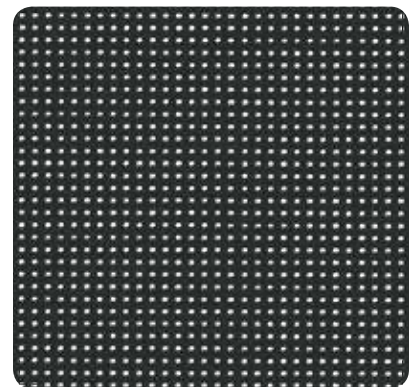
Concrete 69.6 in — 105.1 in

88-2167



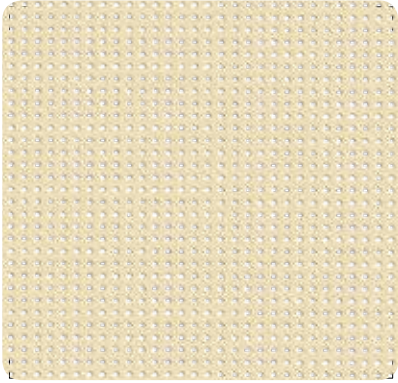
Anthracite 69.6 in — 105.1 in

88-2047

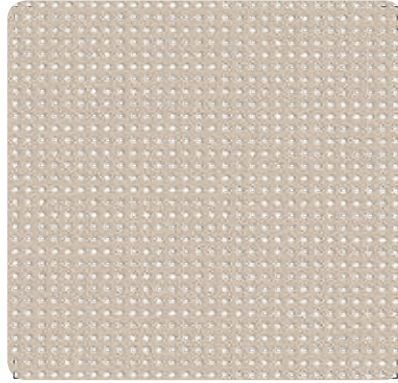


Black 69.6 in — 105.1 in

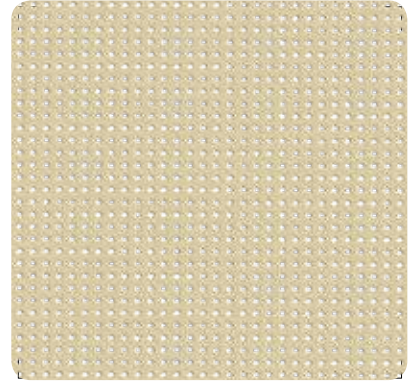
88-2053



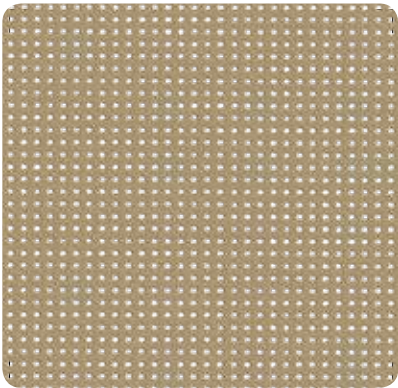
Champagne 69.6in — 105.1in 88-2175



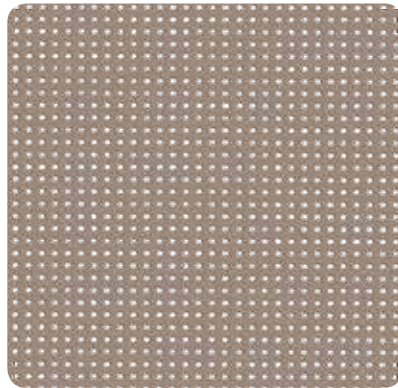
Sandy beige 69.6in — 105.1in 88-2135



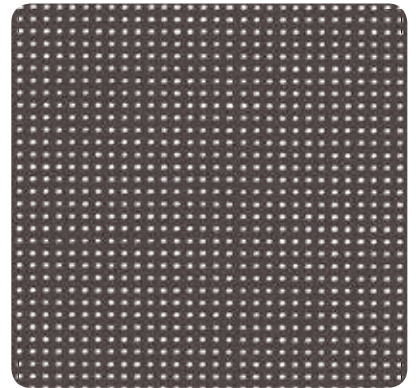
Hemp 69.6in — 105.1in 88-50265



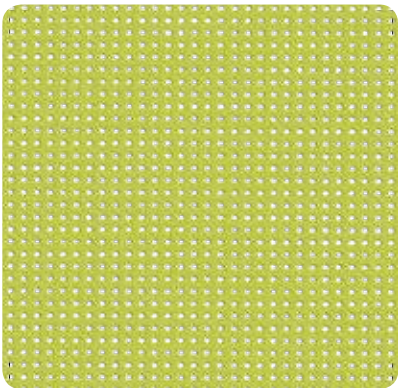
Pepper 69.6in — 105.1in 88-2012



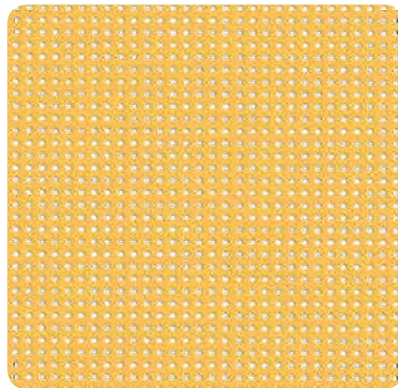
Ash brown 69.6in — 105.1in 88-50329



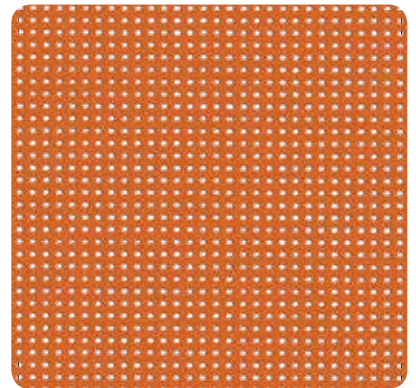
Bronze 69.6in — 105.1in 88-2043



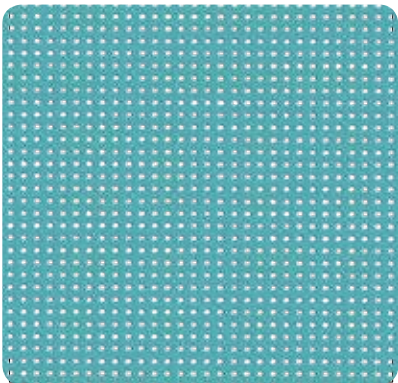
Bamboo 69.6in 88-50333



Apricot 69.6in 88-50332



Paprika 69.6in 88-50308



Bermuda 69.6in 88-50306

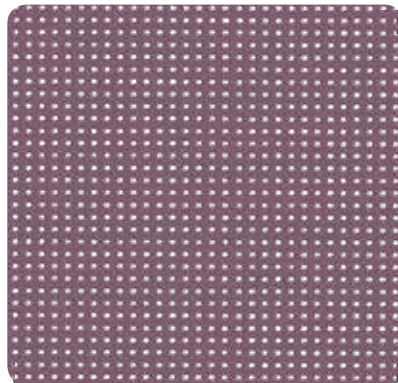
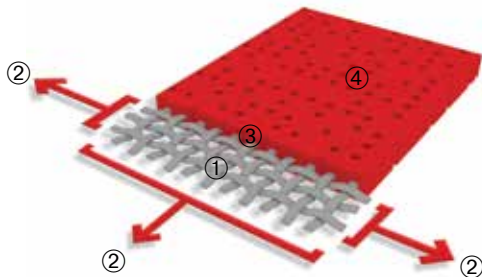


Fig 69.6in 88-50335

■ Exclusive Précontraint® technology

Patented worldwide, the Précontraint® technology by Serge Ferrari involves keeping the composite under tension throughout the manufacturing process. This gives our materials exceptional performance that enables them to surpass market standards in terms of dimensional stability, mechanical strength, coating thickness and flatness.



High-tenacity polyester micro-yarn base cloth	①	Superior elongation and tear resistance
A coating with fabrics under bi-axial constant tension in both warp and weft directions	②	No deformation during processing and use
Thicker coating at the top of the yarns and a dirt resistant surface treatment	③	Superior aesthetic and mechanical durability
Exceptional flatness and thinness	④	Smooth easy to clean finish, space saving, easy rolling

■ Solar and light properties (EN 14501)

		TS	RS	AS	TV n-h	TV n-n	EN 13363-1* Type "C" glazing		EN13363-2** Type "D" glazing	
							g_{tot}^e	g_{tot}^i	g_{tot}^e	g_{tot}^i
88-2012		12	29	59	10	9	0.13	0.48	0.07	0.23
88-2043		9	12	79	8	8	0.13	0.53	0.07	0.28
88-2044		24	65	11	22	9	0.17	0.36	0.13	0.12
88-2047		9	8	83	9	9	0.13	0.54	0.07	0.28
88-2048		13	44	43	12	8	0.12	0.43	0.08	0.19
88-2053		8	6	86	8	8	0.13	0.55	0.07	0.29
88-2135		14	42	44	11	8	0.13	0.43	0.08	0.20
88-2167		9	16	75	9	8	0.13	0.52	0.07	0.26
88-2171		13	38	49	11	9	0.13	0.45	0.08	0.20
88-2175		24	62	14	21	8	0.17	0.37	0.12	0.14
88-50265		15	44	41	12	9	0.14	0.43	0.08	0.20
88-50306		13	37	50	10	8	0.13	0.45	0.08	0.21
88-50308		16	33	51	10	8	0.15	0.46	0.09	0.25
88-50329		10	26	64	9	8	0.12	0.48	0.06	0.24
88-50332		24	52	24	19	8	0.18	0.40	0.12	0.19
88-50333		17	33	50	13	9	0.16	0.46	0.09	0.24
88-50335		10	17	73	9	9	0.13	0.51	0.07	0.26

TS: Solar Transmission (%)

RS: Solar Reflection (%)

AS: Solar Absorption (%)

TS + RS + AS = 100% of incident energy

TV n-h: Normal-hemispherical visible light transmission (%)

TV n-n: Normal-normal visible light transmission (%)

g_{tot}^e : External solar factor

g_{tot}^i : Internal solar factor

*Simplified method
EN 13363-1





The transmission and reflection values above are based on the integrated values of the glass combined with the screen. These are used to calculate the g_{tot} value. Type "C" glazing is double glazing and insulated with low emissivity in position 3 (4 + 16 + 4; Argon-filled) $g = 0.59 - U = 1.2$.

**Detailed method
EN 13363-2

The transmission and reflection values above are based on the integrated values of the glass combined with the screen. These are used to calculate the g_{tot} value. Type "D" glazing is double glazing and insulated with low emissivity in position 2 (4 + 16 + 4; Argon-filled) $g = 0.32 - U = 1.1$.

Soltis

Harmony 88

	■ Technical properties	Standards
Openness factor	8%	
Weight	10.6 oz/yd ²	EN ISO 2286-2
Thickness	0.45 mm	
Width	69.6 in - 105.1 in	
■ Length of rolls		
Standard length in 69.6 in	54.6 yds	
Standard length in 105.1 in	43.7 yds	
■ Physical properties		
Tensile strength (warp/weft)	140/145 daN/ 5 cm	EN ISO 1421
Tear strength (warp/weft)	14/14 daN	DIN 53.363
■ Flame retardancy		
Rating	Method 1 and 2/NFPA 701 — CSFMT19 — Class A/ASTM E84 — CAN ULCS109 M1/NFP92-507 — Class 1/EN 13773 — M-1/UNE 23727-90 — BS 7837 — BS 5867 VKF 5.3/SN 198898 — Schwerbrennbar Q1-Tr1/ONORM A 3800-1 — B1/DIN 4102-1 1530.3/AS/NZS — Group 1/AS NZS 3837 — G1/GOST 30244-94 — Class 1/UNI 9177-87	
Euroclass	B-s2,d0	EN 13501-1
■ Management systems		
Quality		ISO 9001
■ Certifications, labels, guarantees, recycling		
    With S+ Serge Ferrari goes further than the standards. (Consult us for further information.)		
■ Tools and services		
<ul style="list-style-type: none"> — LCA and FDES (Health and Environmental Datasheet) available on request — Personalized service for simulating your project's thermal performance and related Soltis solar protection systems: please contact your Serge Ferrari representative — Tool for evaluating energy savings generated by Soltis solar protection systems: www.textinergie.org 		

The technical data above are averaged values with a +/- 5% tolerance.

The buyer of our products is fully responsible for their application and their transformation with regard to any possible third party. The buyer of our products is responsible for their implementation and installation according to the standards, workmanship and safety regulations in force in destination countries. For information on our contractual warranty, please refer to the relevant terms and conditions.

The values quoted above represent results of tests performed in compliance with common design practices and are provided for information only to enable customers to make the best use of our products. Our products are subject to changes based on technical advances and we reserve the right to modify their characteristics at any time. The buyer of our products is responsible for checking the validity of the above data.